

TEST REPORT

APPLICANT : KOSTIC KOREA LTD.
ADDRESS : 120, LG-ro 360beon-gil, Wollong-myeon,
Paju-si, Gyeonggi-do, Korea

PAGE: 1 of 9

REPORT NO. RT21R-S0018-010-E

DATE: Jan. 14, 2021

SAMPLE DESCRIPTION : The following submitted sample(s) said to be:-

NAME/TYPE OF PRODUCT : PET FILM LABEL(Coating)
SAMPLE ID NO. : RT21R-S0018-010
ITEM NO. : CLEAR, METALIZED, WHITE
MANUFACTURER/VENDOR : KOSTIC KOREA LTD.

SAMPLE RECEIVED : Jan. 04, 2021
TESTING DATE : Jan. 04, 2021 ~ Jan. 14, 2021

TEST METHOD(S) : Please see the following page(s).
TEST RESULT(S) : Please see the following page(s).

- * Note 1 : The test results presented in this report refer only to the object tested.
- * Note 2 : This report shall not be reproduced except in full without the written approval of the testing laboratory.
- * Note 3 : The item no. is assigned by client and indicated according to their requirement and guarantee letter.

Approved by,



Jade Jang / Lab. Technical Manager

Authorized by,



Bo Park / Lab. General Manager



Authenticity check

Intertek Testing Services Korea Ltd.
Seoul Office: Tel : 02-6090-9500 Fax : 02-3409-0025 Web Site : intertek.co.kr
Seoul Lab. Address : 7, Ahasan-ro 5-gil, Seongdong-gu, Seoul, 04793 Korea
Ulsan Lab. Address : 34, Yongam-gil, Chongryang-myeon, Ulju-gun, Ulsan 44989 Korea



※ You can verify the forgery and authenticity by the barcode at the end of this document.

TEST REPORT

REPORT NO. RT21R-S0018-010-E

SAMPLE ID NO. : RT21R-S0018-010

SAMPLE DESCRIPTION : PET FILM LABEL(Coating)

TEST ITEM	UNIT	TEST METHOD	MDL	RESULT
Cadmium (Cd)	mg/kg	With reference to IEC 62321-5 Edition 1.0 : 2013, by acid digestion and determined by ICP-OES	0.5	N.D.
Lead (Pb)	mg/kg		5	N.D.
Mercury (Hg)	mg/kg	With reference to IEC 62321-4 : 2013/AMD1 : 2017, by acid digestion and determined by ICP-OES	2	N.D.
Hexavalent Chromium (Cr ⁶⁺)	mg/kg	With reference to IEC 62321-7-2 Edition 1.0 : 2017, by alkaline/toluene digestion and determined by UV-VIS Spectrophotometer	8	N.D.
Polybrominated Biphenyl (PBBs)				
Monobromobiphenyl	mg/kg	With reference to IEC 62321-6 Edition 1.0 : 2015, by solvent extraction and determined by GC/MS	5	N.D.
Dibromobiphenyl	mg/kg		5	N.D.
Tribromobiphenyl	mg/kg		5	N.D.
Tetrabromobiphenyl	mg/kg		5	N.D.
Pentabromobiphenyl	mg/kg		5	N.D.
Hexabromobiphenyl	mg/kg		5	N.D.
Heptabromobiphenyl	mg/kg		5	N.D.
Octabromobiphenyl	mg/kg		5	N.D.
Nonabromobiphenyl	mg/kg		5	N.D.
Decabromobiphenyl	mg/kg		5	N.D.
Polybrominated Diphenyl Ether (PBDEs)				
Monobromodiphenyl ether	mg/kg	With reference to IEC 62321-6 Edition 1.0 : 2015, by solvent extraction and determined by GC/MS	5	N.D.
Dibromodiphenyl ether	mg/kg		5	N.D.
Tribromodiphenyl ether	mg/kg		5	N.D.
Tetrabromodiphenyl ether	mg/kg		5	N.D.
Pentabromodiphenyl ether	mg/kg		5	N.D.
Hexabromodiphenyl ether	mg/kg		5	N.D.
Heptabromodiphenyl ether	mg/kg		5	N.D.
Octabromodiphenyl ether	mg/kg		5	N.D.
Nonabromodiphenyl ether	mg/kg		5	N.D.
Decabromodiphenyl ether	mg/kg		5	N.D.

Tested by : Jooyeon Lee, Chano Kim, Hayan Park

Notes : mg/kg = ppm = parts per million
 < = Less than
 N.D. = Not detected (<MDL)
 MDL = Method detection limit

Intertek Testing Services Korea Ltd.

Seoul Office: Tel : 02-6090-9500 Fax : 02-3409-0025 Web Site : intertek.co.kr

Seoul Lab. Address : 7, Ahasan-ro 5-gil, Seongdong-gu, Seoul, 04793 Korea

Ulsan Lab. Address : 34, Yongam-gil, Chongryang-myeon, Ulju-gun, Ulsan 44989 Korea



※ You can verify the forgery and authenticity by the barcode at the end of this document.

TEST REPORT

REPORT NO. RT21R-S0018-010-E

SAMPLE ID NO. : RT21R-S0018-010

SAMPLE DESCRIPTION : PET FILM LABEL(Coating)

TEST ITEM	UNIT	TEST METHOD	MDL	RESULT
Bromine (Br)	mg/kg	With reference to EN 14582, by oxygen combustion with bomb and determined by IC	30	N.D.
Chlorine (Cl)	mg/kg	With reference to EN 14582, by oxygen combustion with bomb and determined by IC	30	N.D.
Fluorine (F)	mg/kg	With reference to EN 14582, by oxygen combustion with bomb and determined by IC	30	N.D.
Sulfur (S)	mg/kg	With reference to EN 14582, by oxygen combustion with bomb and determined by IC	30	N.D.
Beryllium (Be)	mg/kg	With reference to US EPA 3052, by acid digestion and determined by ICP-OES	2	N.D.
Antimony (Sb)	mg/kg	With reference to US EPA 3052, by acid digestion and determined by ICP-OES	2	146

Tested by : Hyojoo Kim, Jooyeon Lee

Notes : mg/kg = ppm = parts per million
 < = Less than
 N.D. = Not detected (<MDL)
 MDL = Method detection limit

Intertek Testing Services Korea Ltd.

Seoul Office: Tel : 02-6090-9500 Fax : 02-3409-0025 Web Site : intertek.co.kr

Seoul Lab. Address : 7, Ahasan-ro 5-gil, Seongdong-gu, Seoul, 04793 Korea

Ulsan Lab. Address : 34, Yongam-gil, Chongryang-myeon, Ulju-gun, Ulsan 44989 Korea



※ You can verify the forgery and authenticity by the barcode at the end of this document.

TEST REPORT

REPORT NO. RT21R-S0018-010-E

SAMPLE ID NO. : RT21R-S0018-010

SAMPLE DESCRIPTION : PET FILM LABEL(Coating)

TEST ITEM	CAS NO.	UNIT	TEST METHOD	MDL	RESULT
Dibutyl phthalate (DBP)	84-74-2	mg/kg	With reference to IEC 62321-8 Edition 1.0 : 2017, by solvent extraction and determined by GC/MS	50	N.D.
Di(2-ethylhexyl) phthalate (DEHP)	117-81-7	mg/kg		50	N.D.
Di-n-octyl phthalate (DNOP)	117-84-0	mg/kg		50	N.D.
Diisononyl phthalate (DINP)	28553-12-0 68515-48-0	mg/kg		100	N.D.
Diisodecyl phthalate (DIDP)	26761-40-0 68515-49-1	mg/kg		100	N.D.
Benzyl butyl phthalate (BBP)	85-68-7	mg/kg		50	N.D.
Diisobutyl phthalate (DIBP)	84-69-5	mg/kg		50	N.D.
Di-n-hexyl phthalate (DNHP)	84-75-3	mg/kg		50	N.D.

Tested by : Hayan Park

Notes : mg/kg = ppm = parts per million
 < = Less than
 N.D. = Not detected (<MDL)
 MDL = Method detection limit

Intertek Testing Services Korea Ltd.

Seoul Office: Tel : 02-6090-9500 Fax : 02-3409-0025 Web Site : intertek.co.kr

Seoul Lab. Address : 7, Ahasan-ro 5-gil, Seongdong-gu, Seoul, 04793 Korea

Ulsan Lab. Address : 34, Yongam-gil, Chongryang-myeon, Ulju-gun, Ulsan 44989 Korea



※ You can verify the forgery and authenticity by the barcode at the end of this document.

TEST REPORT

PAGE: 5 of 9
DATE: Jan. 14, 2021

REPORT NO. RT21R-S0018-010-E

SAMPLE ID NO. : RT21R-S0018-010
SAMPLE DESCRIPTION : PET FILM LABEL(Coating)

* View of sample as received;-



Intertek Testing Services Korea Ltd.
Seoul Office: Tel : 02-6090-9500 Fax : 02-3409-0025 Web Site : intertek.co.kr
Seoul Lab. Address : 7, Ahasan-ro 5-gil, Seongdong-gu, Seoul, 04793 Korea
Ulsan Lab. Address : 34, Yongam-gil, Chongryang-myeon, Ulju-gun, Ulsan 44989 Korea

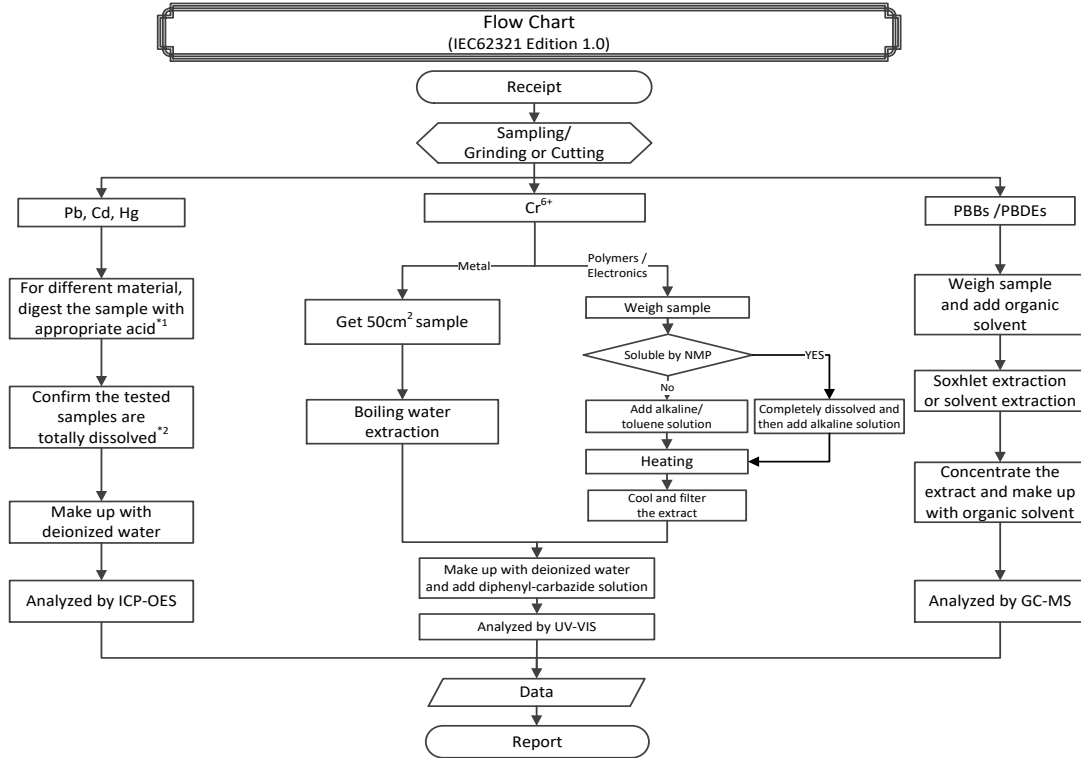


※ You can verify the forgery and authenticity by the barcode at the end of this document.

TEST REPORT

REPORT NO. RT21R-S0018-010-E

SAMPLE ID NO. : RT21R-S0018-010
SAMPLE DESCRIPTION : PET FILM LABEL(Coating)



Remarks :

*1 : List of appropriate acid :

Material	Acid added for digestion
Polymers	HNO ₃ , HCl, HF, H ₂ O ₂ , H ₃ BO ₃
Metals	HNO ₃ , HCl, HF
Electronics	HNO ₃ , HCl, H ₂ O ₂ , HBF ₄

*2 : The samples were dissolved totally by pre-conditioning method according to above flow chart.



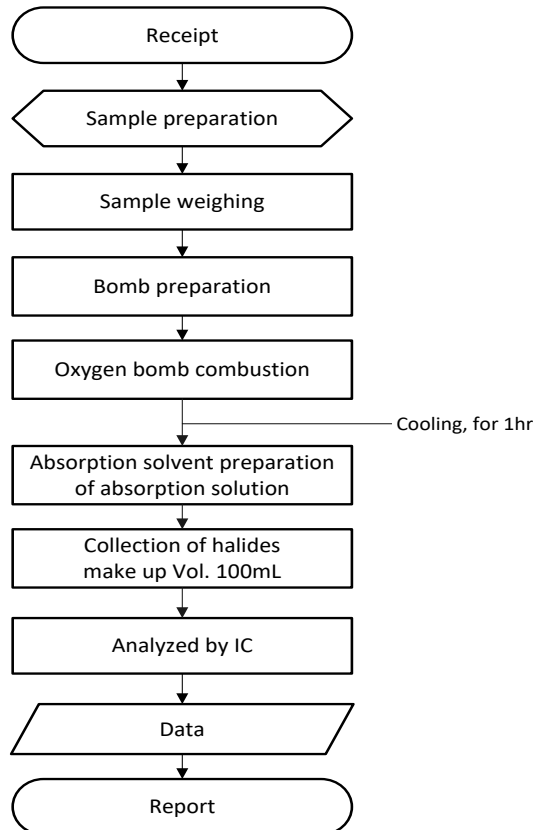
TEST REPORT

REPORT NO. RT21R-S0018-010-E

SAMPLE ID NO. : RT21R-S0018-010

SAMPLE DESCRIPTION : PET FILM LABEL(Coating)

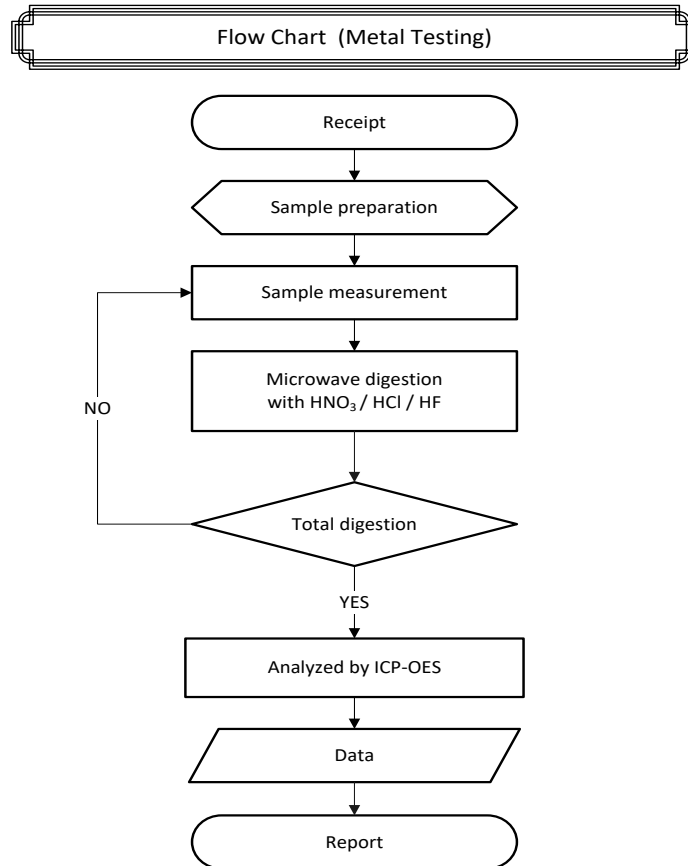
Flow Chart (EN14582)



TEST REPORT

REPORT NO. RT21R-S0018-010-E

SAMPLE ID NO. : RT21R-S0018-010
SAMPLE DESCRIPTION : PET FILM LABEL(Coating)



** Remarks : The samples were dissolved totally by pre-conditioning method according to above flow chart.



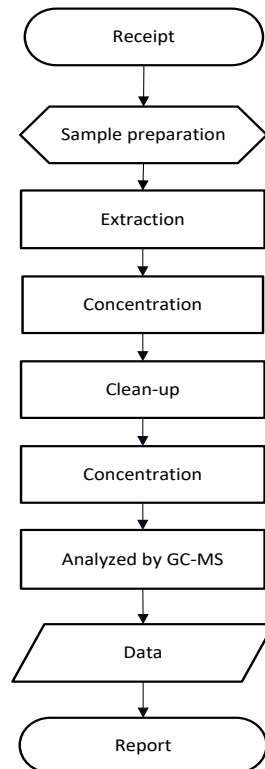
TEST REPORT

PAGE: 9 of 9
DATE: Jan. 14, 2021

REPORT NO. RT21R-S0018-010-E

SAMPLE ID NO. : RT21R-S0018-010
SAMPLE DESCRIPTION : PET FILM LABEL(Coating)

Flow Chart (Phthalates)



***** End of Report *****

Except where explicitly agreed in writing, all work and services performed by Intertek is subject to our standard Terms and Conditions which can be obtained at our website: <http://www.intertek.com/terms/>. Intertek's responsibility and liability are limited to the terms and conditions of the agreement.

This report is made solely on the basis of your instructions and / or information and materials supplied by you and provide no warranty on the tested sample(s) be truly representative of the sample source. The report is not intended to be a recommendation for any particular course of action, you are responsible for acting as you see fit on the basis of the report results. Intertek is under no obligation to refer to or report upon any facts or circumstances which are outside the specific instructions received and accepts no responsibility to any parties whatsoever, following the issue of the report, for any matters arising outside the agreed scope of the works. This report does not discharge or release you from your legal obligations and duties to any other person. You are the only one authorized to permit copying or distribution of this report (and then only in its entirety). Any such third parties to whom this report may be circulated rely on the content of the report solely at their own risk.

This report shall not be reproduced, except in full.
This report is not related to the scope of Korea Laboratory Accreditation Scheme.

Intertek Testing Services Korea Ltd.
Seoul Office: Tel : 02-6090-9500 Fax : 02-3409-0025 Web Site : intertek.co.kr
Seoul Lab. Address : 7, Ahasan-ro 5-gil, Seongdong-gu, Seoul, 04793 Korea
Ulsan Lab. Address : 34, Yongam-gil, Chongryang-myeon, Ulju-gun, Ulsan 44989 Korea



※ You can verify the forgery and authenticity by the barcode at the end of this document.